



Economic Opportunity Agency



# 2022 Annual Report

## EOA Board of Directors

Traci Jardin, President

Gracie Ziegler, Vice President

Patrick Hannan, Secretary/Treasurer

Faye Jones, Past President

Jennifer Cook

Dr. Grace Donoho

Dr. Tara Harshaw

Michelle Hayward

Derek Hudson

Ron Johnson, Jr.

Dr. David Jolliffe

Casey Jones

Laura Kellams

Erika Rodriguez

Sara Tumlison

Debra Self

### Executive Director

Delia Anderson Farmer

Economic Opportunity Agency, Inc (EOA) is a community action agency dedicated to helping low-income households in the region succeed. EOA was established in 1965 and our mission is “empowering children and families to learn, connect, and succeed.”

EOA administers a range of programs designed to address the roots of poverty through a strategic multi-generational approach, connecting low-income families with the tools to achieve financial stability and break the cycle of poverty.

EOA has a vision of Northwest Arkansas as a resilient community where children and families experiencing adverse circumstances have the opportunity to thrive, become self-sufficient, and live an improved quality of life.

EOA is a proud partner agency of:



# Letter from the Executive Director

We are pleased to share our 2022 Annual Report which highlights the impactful work that is taking place at EOA to benefit children and families in Northwest Arkansas. As you will see from this report, our programs are diverse and touch all ages and stages of people's lives. This is made possible with the combined support of our leadership, staff, donors, partners, funders, and volunteers.

During 2022, EOA emerged from the aftermath of the COVID-19 Pandemic with lessons learned about the importance of flexibility, creativity, and resilience. We also understood that even though the Pandemic was "over" in the minds of some, the economic effects among low to moderate income families remained strained. As a result, we launched the Step Up Program which is designed to help individuals overcome obstacles that stand in the way of economic stability.

EOA Children's Services has continued to thrive and serve children and families through Head Start and Early Head Start, EOA Children's House, and the SafeCare Program. We are proud of our Children's Services team who make a direct impact on the lives of families every day. We recognize that parents are a child's first teacher and we engage with parents, caregivers, and guardians in the child development process, to create an environment for positive outcomes.

Our Low-Income Home Energy Assistance Program assists low to moderate income individuals and families with home energy costs to help them stay warm in the winter and cool in the summer. Our Energy Assistance team members serve as a lifeline for people in the community, including the elderly and disabled, who face hard economic choices of whether to buy medicine this month or pay the gas bill to stay warm.

Inside this Annual Report is also information about the financial health of our Agency. We believe in being good stewards of public, private, and in-kind support that EOA receives throughout the year. We commend our Administrative and Advancement team for the Agency's success in this area. We are also thankful for our Governing Board and Policy Council for providing steady, committed governance and guidance to ensure sound policies and practices.

EOA has experienced an amazing year with the help of so many organizations and people in the community that continue to support our programs and truly care about the children and families we serve. Together, we will continue our mission of "empowering children and families to learn, connect, and succeed."

We are grateful for your interest, support, and service.



Delia Anderson Farmer, CCAP

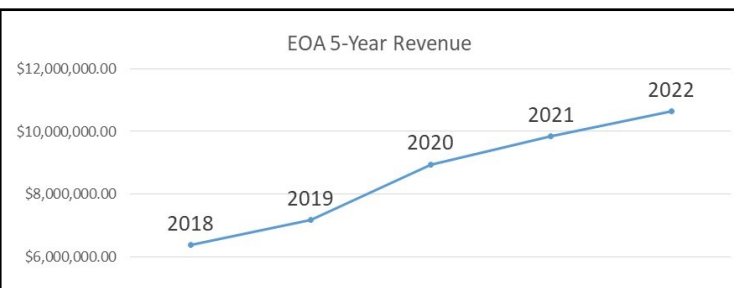
Executive Director



# 2022 Financial Report

Economic Opportunity Agency Revenue	
Head Start/Early Head Start	4,447,701
HS/EHS American Recovery Funds	222,549
USDA School Nutrition	260,798
USDA Commodities	266,334
Child Care Development Fund	298,866
Extended Day Child Care	167,527
CSBG	354,214
CSBG CARES	159,948
Local Donations	282,301
Other Revenue	3,092
SafeCare	438,567
VOCA	275,683
LIHEAP American Recovery Funds	734,728
LIHEAP	1,558,028
In-Kind	996,991
United Way	50,143
Corporate Fund	109,215
<b>Total Revenue</b>	<b>10,632,685</b>

Economic Opportunity Agency Expenses	
Salaries	4,528,694
Benefits/Taxes	885,411
Travel	94,287
Occupancy	698,598
Supplies	618,331
Consultants	263,012
T&TA	150,887
Program Costs	2,872,918
Equipment	126,582
Other	315,528
<b>Total Expenses</b>	<b>10,554,248</b>



**EOA Economic Impact**

With **159** full-time employees in 2022, EOA not only provided services to improve the community, but also contributed to the local economy by providing quality employment for local residents.

Approximately **85%** of EOA's annual funds stay in the NWA community, contributing over **\$7.3** million to the local economy each year.

**Annual Independent Financial Audit Results**

According to an independent audit report by EGP, PLLC dated February 3, 2023, EOA of Washington County, Inc. had no findings or deficiencies noted for the fiscal year ending October 31, 2022.

**EOA relies on public and private funding sources to administer its programs. All programs aim to address the roots of poverty and empower low-income families to succeed in Northwest Arkansas.**



The number of unduplicated families  
the EOA LIHEAP Program  
assisted in 2022:

**3,241**

The Low Income Home Energy Assistance Program (LIHEAP) helps keep families safe and healthy by providing assistance to eligible low-income households for heating and cooling energy costs. In 2022, LIHEAP provided **\$1,570,000** in assistance.

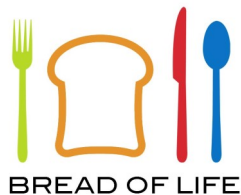


The Department of Energy's Weatherization Assistance Program is the nation's core program for delivering energy efficiency services to low-income households. Computerized energy audits use advanced diagnostic technology to determine the energy-conservation needs of a house. EOA partners with Crawford-Sebastian Community Development Council for Weatherization services in Washington County. **9 homes were weatherized in 2022.**

**211,713**

**Pounds of food distributed in 2022**

The Emergency Food Assistance Program (TEFAP) distributes United States Department of Agriculture donated foods (commodities) to organizations in order to provide nutritious foods to low-income households. Commodities help support healthy, independent living for vulnerable populations. To store and distribute these foods, EOA has had a long-time partnership with the Bread of Life in Springdale and LifeSource in Fayetteville.



The Emergency Food Assistance Program (TEFAP)





The EOA Children's Services program is federally funded through Head Start and Early Head Start grant awards and designed to help break the cycle of poverty by providing infants and preschool children of low-income families with a comprehensive program to meet their emotional, social, nutritional, and psychological needs. EOA Children's Services conducts a community assessment of Washington County, Arkansas every five years. The community assessment considers the current deficits and needs within in the community to better serve the area. The assessment highlights strengths of the program and the service area, as well as challenges and areas of need. Our most recent community assessment concluded that increased income-inequality and scarcity of resources for children in the area are prevalent issues that should be addressed

thoughtfully and effectively. Investing in the young children of this community enhances their ability to thrive and succeed, which in turn, positively impacts the community at large. Awareness and collaboration are key ingredients in successfully pursuing this mission.

### 8 Child Care Centers in Washington County

Ellen Smith, Fayetteville

Ivory M. Conley, Fayetteville

North Street, Fayetteville

Old Farmington Road, Fayetteville

Pat Walker Center for Children, Springdale

Oak Avenue, Springdale

Springdale Airport, Springdale

West Washington County, Lincoln

### 31,766 In-Kind Hours Dedicated to Family Engagement Initiatives in 2022!

#### Initiatives Include:

Reading at Home, Home Learning Logs, Volunteering in the Classroom, Family Learning Parties, Policy Council Meetings, and COVID Vaccine Campaign

**4,680** books were distributed to start or enhance home libraries



### Family Services Approach

Research shows that strong parent/child interactions promote school readiness and life-long learning. Our first goal anchors family engagement work around the fundamental core premise: we must build partnerships with **all families** to enhance parent/child interactions.

Building on program development and research done through a partnership with the Harvard University's Center on the Developing Child's Frontiers of Innovation network, *Shine on, Families* is a researched-based curriculum which utilizes a PEER mantra- Pause, Engage, Encourage, and Reflect- to promote family interactions that build executive function, a foundational skill for school readiness. *Shine on, Families* extends our classroom curriculum into the home and encourages parents as their child's first teacher.

The curriculum guides families through daily learning activities that are fun, interactive, and easily integrated into home routines. This creates a shared language between staff and families, which strengthens child outcomes. *Shine on, Families* strategies are also informed by research on adult learning, with a strong focus on providing multiple venues for modeling, coaching, practice, and reflection.

#### 234 families received specialized family services in 2022:

- Crisis Intervention \* Housing Assistance \* Mental Health Services \* ESL Training \* Adult Education Assistance \* Job Training \* Substance Abuse Prevention
- \* Substance Abuse Treatment \* Child Abuse & Neglect Services
- \* Health Education \* Parenting Education



**1,552 Followers on the EOA Head Start Facebook page, 10% Increase in 2022!**



**111,149 nutritious meals were served in 2022, reducing food insecurity.**

EOA Head Start/ Early Head Start Revenue		
Federal Grant		3,647,530
USDA		216,452
Local Donations		16,040
In-Kind		744,073
<b>Total Revenue</b>		<b>4,624,095</b>
EOA Head Start/ Early Head Start Expenditures		
	Budgeted	Actual
Salaries	2,303,070	2,301,478
Benefits	555,118	534,961
Travel	26,200	34,858
Occupancy	260,157	168,813
Supplies	137,542	164,169
Consultants	143,876	148,600
Food Unreimbursed	67,000	71,572
Food Reimbursed	180,000	216,462
T&TA	75,540	98,441
Other	93,971	128,031
Equipment	0	11,550
In-Kind Expenses	586,058	744,073
<b>Total Expenditures</b>	<b>4,428,532</b>	<b>4,623,008</b>

EOA Early Head Start Expansion Revenue		
Federal Grant		800,170
USDA		44,336
Local Donations		0
In-Kind		183,090
<b>Total Revenue</b>		<b>1,027,596</b>
EOA Early Head Start Expansion Expenditures		
	Budgeted	Actual
Salaries	569,177	506,396
Benefits	146,618	105,547
Travel	2,330	7,603
Occupancy	65,523	39,604
Supplies	49,195	34,261
Consultants	46,025	36,984
Food Unreimbursed	5,405	14,872
Food Reimbursed	33,000	44,336
T&TA	20,844	22,494
Other	15,397	28,401
Equipment	0	4,008
In-Kind Expenses	171,885	183,090
<b>Total Expenditures</b>	<b>1,152,399</b>	<b>1,027,596</b>

EOA Head Start/ Early Head Start American Recovery Act Funds Revenue		
Federal Grant		343,857
<b>Total Revenue</b>		<b>343,857</b>
EOA Early Head Start Expansion American Recovery Act Expenditures		
	Budgeted	Actual
Salaries	362,146	243,253
Benefits	64,642	42,579
Equipment	50,880	49,970
Other	15,000	8,056
<b>Total Expenditures</b>	<b>492,668</b>	<b>343,858</b>



**Preparing Children for Kindergarten:**  
 Our program’s curriculum model is built on a foundation of *The Creative Curriculum*. Our classroom teaching teams use Shine Early Learning’s Curriculum Plans to implement units around a set of universally meaningful themes. Weekly lesson plans and supplemental materials provide strong support for intentional teaching, meaningful small-group activities, and engaging read-alouds. In this model, *The Creative Curriculum* continues to serve as the foundation, providing the philosophical orientation to how children learn, and guiding teachers in setting up the learning environment. *The Creative Curriculum* approach is developmentally appropriate and supports children’s learning in all domains included in the Head Start Early Learning Outcomes Frameworks: Ages Birth to Five, as well as Arkansas Child Development and Early Learning Standards: Birth through 60 months. In addition, curriculum plans are designed and can be modified to support our program’s School Readiness Goals, encompassing social-emotional, approaches to learning & play, language & literacy, math & science, social studies, the arts, and physical development.

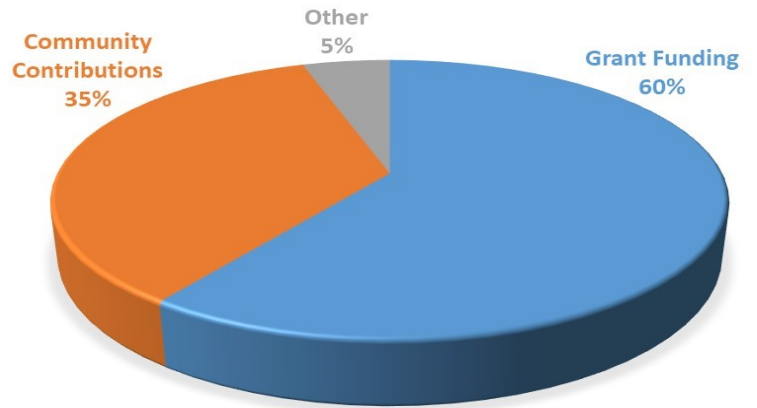


2022 Head Start/Early Head Start		
Total number of children served	206	260
Total number of families served	137	197
Average monthly enrollment	114	146
Percentage of categorical/income eligible children served	91%	94%
Percentage of children that received medical exams	26%	18%
Percentage of children that received dental exams	31%	39%



EOA Children's House was founded in 1978 as a program providing services and care to children under the age of five who have been abused, neglected, or have faced adverse childhood experiences.

These services include mental health counseling, preschool education curriculum, nutrition services, and family support services.



CHILDREN'S HOUSE FUNDING

**2,755 followers on the Children's House Facebook Page (5% increase in 2022!)**



Children who have been abused or neglected typically have delayed development of approximately 18-months, depending on the severity of their trauma. The goal at EOA Children's House is to work with each child to achieve age-appropriate developmental milestones so that when they enter Kindergarten, they are at the same developmental level as their peers. EOA staff work with community partners to assess for therapy needs, including special education, speech therapy, occupational therapy, and/or physical therapy services.



**CHILDREN EOA SERVED IN 2022:**

**9 children were in Foster Care**

**15 children were homeless**

**61 children had an identified disability**

**67 children were referred from child welfare agencies and Juvenile Court**



# STEP UP

ECONOMIC STABILITY PROGRAM

The EOA Step Up Economic Stability Program empowers individuals to overcome obstacles that stand in the way of economic self-sufficiency.

Program Participants establish a budget plan and set attainable goals in the areas of employment, education, and income management. Case management, supportive services, resources, and referrals are provided to help participants make progress toward achieving their goals.

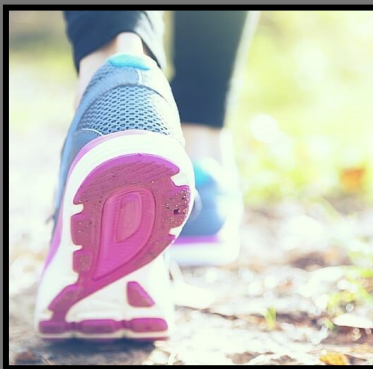
A total of 24 participants participated in the program in 2022, and 100% established a household budget which is the first step in the process.

The program was launched in May 2022 and is funded by the Community Services Block Grant.

## HEALTH INITIATIVES

EOA promotes health and wellness throughout the year through several health initiatives. By creating a culture of health and wellness among the staff, our employees not only feel better about themselves, but it can also lower agency costs such as insurance, workers' compensation claims, and reduce absenteeism.

In 2022, 86 staff members participated in a friendly "Start Walking Now" competition, completing over 34.7 million steps during the 3-month event.



SafeCare Arkansas is a weekly home visiting program for families of children ages birth to five. The goal of SafeCare Arkansas is to help parents prevent and identify common childhood illnesses or injuries, determine when a child should go to the doctor, aide parents in keeping their homes safe, and increase positive interactions with their child. This program helps to prevent the removal of children from the home and re-occurrence of child maltreatment.

In 2022, the following referrals were made from DHS:

Benton County—95

Carroll County—15

Madison County—5

Washington County—162

Of those referred, 284 adults and 220 children received services and 139 families completed the program in 2022.



Economic Opportunity Agency



# EOA 2022 Major Donors

---

## Individuals:

Cordell Ashby	Derek Hudson	Donald & Kathryn Pederson
Mary Bryant	Jane Hunt	Larry Perkin
Rick & Belinda Carpenter	David & Holly Johnson	Leslie Perryman
Vernon & Paulette Collins	Brian & Faye Jones	Reid & Sarah Phillips
Ginger Crippen	Casey Jones	Sheila Posey
Jason & Megan Cuddy	Robert & Bonnie Jones	Jim & Beverly Rouse
Roger Cunningham	Hazel Keller	Tim & Debbie Self
Shaunessa Davison	Michael & Vicki Lanier	Frank & Sara Sharp
Grace Donoho	Kyle & Laura Kellams	Brett & Kristen Smith
Mark & Rhonda Ellis	Omar & Sarah Lowrance	James Smith
Susan Park Esche	Adrian Luttrell	Jason & Rebecca Smith
Delia Anderson Farmer	Michael & Debra Luttrell	Michael & Darcy Smith
Greg & Judi Fess	Mark & Cheri Marks	Pam Smith
Miller & Peggy Ford	Nancy Cole Mays	James & Susan Spencer
John Garlinghouse	Betty Minter	Brent & Shelle Summers
Todd & Rebecca Gear	Luke Mitchell	Wade Timmermann
Don & Debra Harris	Jeannette Moreno	Rodney & Janna Renee Vick
Doris Hastings	Kathy Nutt	Martha Westberg
Erin Hinz	Brad & Julie Olsen	Guendaline Whitehead-Broyles
Charles Horne	Derrick & Julie Olsen	Linda Wray
Mary Howard	Brett & Julie Parker	Ann Marie Ziegler

*Thank You!*

# EOA 2022 Major Donors

---

## Corporations & Foundations:

CARE Initiative	The Robert E. Wood Trust
The Carpenter Foundation	U.S. Department of Agriculture
Excellerate Foundation	U.S. Department of Human Services
Fred J. Brunner Foundation	U.S. Department of Justice
Impressions Online Boutique	United Way of Northwest Arkansas
JH Computer Group	Willard & Pat Walker Charitable Foundation
PepsiCo	

# *Thank You!*

## In-Kind Support:

ACS Playground Adventures	INTOUCH Coaching	Sassafras Springs Vineyard
Bamboo HR	JH Computer Group	Springdale Public Schools
The CARE Initiative	Junior League of NWA	St. James Baptist Church
City of Fayetteville	K&K Vet Supply	The Cockpit Catering Co.
City of Lincoln	NAEIR	Tri Cycle Farms
Crye-Leike Realtors	Ozark Natural Foods	University of Arkansas
Foundations for Families	Questec Arkansas	Walmart Optical
	RMP Law Firm	Washington County



Economic Opportunity Agency

*“Empowering children and families to  
learn, connect, and succeed.”*

## CONTACT US

Economic Opportunity Agency

614 E. Emma, M401

Springdale, AR 72764

(479) 872-7479

[www.eoawc.org](http://www.eoawc.org)

### EOA Executive Team:

Delia Anderson Farmer, EOA Executive Director

Anna Cannon, Director of Children’s Services

Megan Cuddy, Director of Advancement

Julie Parker, Director of Finance

## CONNECT WITH US

**facebook**

@eachildrenshousenwa

@eoawashingtoncountyheadstart



Follow us on  
**Instagram**

@economic\_opportunity\_agency

[www.eoawc.org](http://www.eoawc.org)